

5 YEARS ANNIVERSARY

h@ndBook

Anniversary EDITION

04TH SEPT 2021

How to's collection



Your Unwavering Support

Each story is a reflection of our
client's brief

Design Lifestyle

On the occasion of 5 year completion
of K S Insight Architectural
Consultants

How to design?

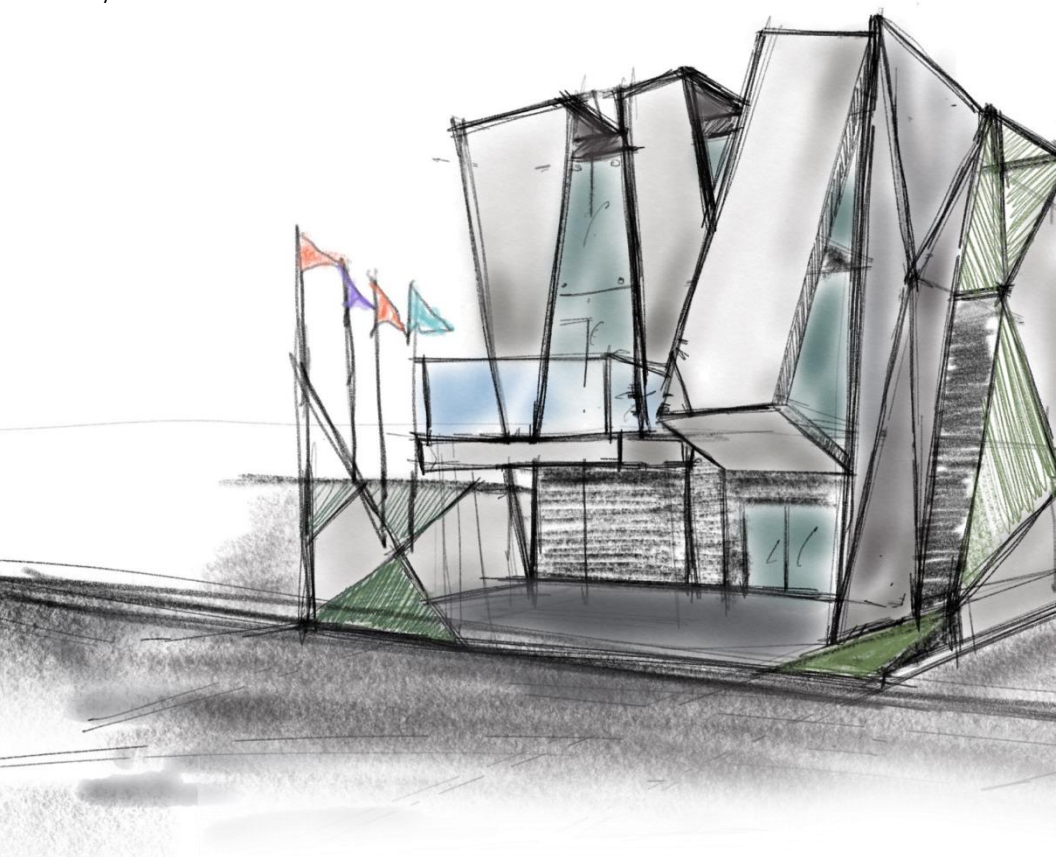
In this book we have organized
various ways to improve your
lifestyle through design.



architect K atelier
STEPPING UP

Overview

Crafted with love: A how-to booklet by Team Architect K Atelier to share design and decor tips. Designed and planned exclusively for our valuable clients. A handy booklet that you can keep and refer to when needed. Whether you are planning to decorate a wall or looking for some decoration ideas for Diwali, this booklet will provide you most relevant tips on different topics that can save your time and money.



THE DESIGN HANDBOOK

2021

FEATURING OUR IDEAS TO EXPRESS THE WAY
OF DESIGNING THINGS AT YOUR OWN

CONTENTS

- 1. How to plan wardrobes?**
Tricky parts will ease designing
- 3. Home Office Setup**
Workspace requirements
- 6. How to start planning your Dream House?**
Guide Planning your future home
- 4. Team Profile**
Synergy in our firm represents creative workflow
- 4. How to plan a kitchen?**
Ideas which can you design your kitchen
- 7. Indoor Plants guide and tips**
Treatment, choices etc.
- 8. Award Mention**
Queen Huh's Memorial
- 9. About Us.**



Project - Mansh Residence

UTMOST INITIATIVE

Design is not a profession but an expression; expression of individual and collective aspirations. The word design has many connotations and holds significance at different levels. It is the synchronization of materials and methodologies in the most productive and economic way, in harmony with all the essential elements required for a certain function. Design is not merely the superficial facade rather it is the pragmatic essence of a progressive vision. It does involve complexity and intricacy. It is the synthesis of technological, social and economic requirements keeping in mind the biological necessities and psychological impacts of various materials, shapes, colours, volumes and spaces. The designer has to deal with the immediate, considering the ultimate and has to be equally attentive to the periphery and the core. He must know that all the aspects of design are indivisible thus he needs to lend equal heed to internal and external characteristics. In order to bring out resourcefulness and inventiveness, the profession of designers doesn't want them to be in isolation but in relationship with the need of individuals and communities. They will have to go beyond the tag of a specialist and resonate with the demands of the present and future communities. And certainly design is that virtue of human intellect which has the ability to cure hearts and make a lasting impact on minds.



LUXURY IN EACH DETAIL

So, with the functionality, space allocation and such other practical parameters, we curated aesthetically pleasing ambience, with the right amount of comfort and style. The pervasive motifs have a conventional touch to them– which has metamorphosed and can be seen lending a graceful touch to the interior articulation. The expression adds character to the feminine grace that adorns the aura – and in a way becomes a ‘statement on Indian women’.

How to

STYLE, DESIGN

ARRANGE things

How to plan for a wardrobe ?

A wardrobe is an essential storage system for every being. While there are ample options in the market for a wardrobe, it is equally tedious to choose one that fits one's needs. Well, as designers we are presenting some tips to ensure you get the most suitable one.

Measure the space

For the appropriate wardrobe, it is important to analyse the availability of space. To avoid misuse of space, the exact size wardrobe is essential. It should be neither too big nor too small.

Understand your priority.

For designing a wardrobe or to buy a new one, you need to scrutinize your requirements. You can also examine your present wardrobe to understand what it lacks if you need more shelves than hanging space or vice versa.

Doors

A min of 24 inches of wardrobe requires another 3 ft. for the doors to open, while sliding doors can consume much less space.

Materials

The range includes laminates, acrylics, membranes, glass, aluminium, lacquer and much more. For a cost-effective wardrobe, laminates are the most durable option and their range itself is quite varied.

Colour

While the colour of a wardrobe solely depends on the design theme of the bedroom, it is important to realize what vibe you wish to set.

It reflects yourself

The wardrobe is always the last piece of the puzzle. When you step into the clothing, that's the final step to figuring out that character. So make it in a planned way.





K's insight
atelier



Find Neatness and beauty

Perfect blend of contrast with unique color scheme creates a striking atmosphere of stimulation promoting encouragement towards work. The design intent is to create a work environment that is motivating and inspiring; where interaction and collaboration are valued. A Jazzy work space to focus on the artistic instinct, an impeccable place to let the creativity flow. The aim while designing your workspace should be minimalist.

HOME OFFICES

“A sophisticated decent workspace actually will make you sit and complete your to-do list.”

How to set up your workstation at home ?

Location

The most crucial factor that decides your workspace design is a good location. It must be airy, very well ventilated, adequately lit with natural light and if possible can have a view. This mainly ensures an overall productive day!

Privacy

For most people, a private workspace at home is an arrangement due to the lack of a proper space or room. In case you have a separate room, privacy isn't an issue, but it turns out to be quite crucial in the makeshift workstation. Ensure the space is well separated from other areas or you can also opt for temporary partition systems such as curtains, jaalis etc., to avoid disturbance.

Accessory

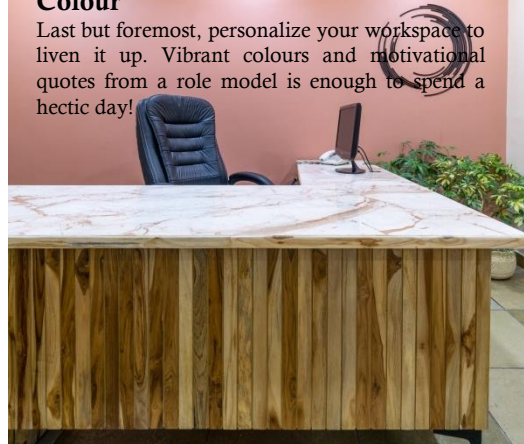
For a hassle-free work environment, one must invest in a good quality chair. A superior quality ergonomic chair can ensure more comfort and related productivity.


Storage

Storage is essential for professionals whose work ranges from digital mediums to non digital ones. They require space to store files and other important documents.

Colour

Last but foremost, personalize your workspace to liven it up. Vibrant colours and motivational quotes from a role model is enough to spend a hectic day!





HOW ? TO PLAN YOUR DREAM HOUSE

“ What good is a dream house if you haven't got a dream? ”

-Julius Shulman

Have you always dreamt of your own home but weren't sure how to start? Designing your perfect dream house isn't as daunting of a task as it might first seem. It might seem daunting, but here are some tips to help you and your designer turn your dream home into reality.

The following are six tips to help you create the perfect house design :

Start simple

Well, communication is the key and not fancy applications. As simple as it sounds, translating ideas on paper to formalize an initial concept is essential.

Think about the future

Visualize the future so that you can plan for a house that accommodates all your subsequent plans. Incorporating future requirements ensure flexibility for the coming years as situations change.

Showcase and maximize the lot

The site plays an important role while designing and so does the context. Utilize the potential of the land pocket to the fullest to design spaces that are user friendly and meet their requirements.

Prioritize features

After conceptualizing the design proposal, it is important to identify the details in reference to the accepted design theme while simultaneously fulfilling all the requirements.

Consider function and flow

While moving further, the designer must understand the lifestyle of the user. This helps in devising functional spatial planning for your home while attuning to an improved lifestyle.

Reflect on Light

The concluding element is yet the most important. Natural light is an inherent part of a good design. It is critical that all the spaces in your house are blessed with ample natural light.



"As a group of young professionals and achievers, we work for the aspiration of end user. For Clients and Communities we serve, our aim is to contribute concrete & refined improvements to the cities & lifestyle of the people. Our work is to create, inspire & connect through functional and world-class design."

- Ar. Kulveer Singh
Principal Architect



Dr. Navneet Munoth
Knowledge Partner



Er. Sanjay Shrivastava
Structural Consultants

Hop-in team — without them we couldn't make it till here



ASHIRVAAD
Tripathi Ji



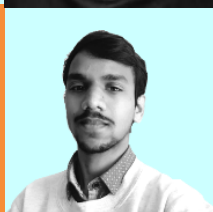
SURYA
Jack of all trades



RISHI
Graphical smiley



GOPAL
Mr. Sajjan



AR. SHIVAM SAHU
Clickartist



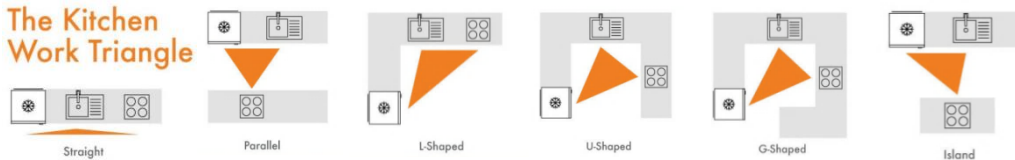
NIHAL
All-rounder



How to plan kitchen?

The kitchen is where many essential household activities take place, including cooking, eating, entertaining, conversing, and scheduling. Thereby, a kitchen should be functional, comfortable, and attractive. And since designing a kitchen is challenging, it is important to make sure you get all the components right the first time.

The Kitchen Work Triangle



Kitchen space planning recommendations

The spatial planning of a kitchen must be done carefully, whether the kitchen is new or being remodelled. However, there are limitations in the latter. To begin designing your kitchen, take exact measurements of available floor space, then place the basic elements using the following guidelines.

Doorways and walkways

Doors must be placed cautiously to reduce clearance problems. It should be a minimum of 32 inches wide, while the passage should be a minimum of 36 inches wide and can be more significant according to the area and amount of people working inside.

Work Triangle theory

A work triangle comprises desirable locations of the three main components of a kitchen refrigerator, sink and furnace. It minimizes the distance and improves functionality.

each side can be between 4 and 9 feet. In the case of multiple people, separate triangles must be planned with a minimum intersection.

Sink and dishwasher positioning

Flank any sink with landing areas of at least 24 inches on one side and at least 18 inches on the other or use a rolling kitchen cart to minimize area usage. In the case of a secondary sink, allow at least 3 inches of countertop on one side and 18 inches on the other. Install the nearest edge of the dishwasher within 36 inches of the nearest edge of a sink. Also, leave at least 21 inches between the dishwasher and any adjacent appliances, cabinets, or other obstacles.

Counter size and placement

Designers recommend that a kitchen include at least 158 total inches of the usable countertop, which is considered any span, including islands, that is at least 24 inches deep and has at least 15 inches of clearance above. It's recommended to include at least a

24-inch-wide span of countertop next to a sink for prep work. Plan for at least 15 inches of countertop beside the handle side of the refrigerator or on either side of a side-by-side refrigerator. Allow at least 12 inches of countertop on one side of a cooking surface and 15 inches on the other. It would be best to extend the countertop at least 9 inches beyond the burners for kitchen layouts with island appliances. For a separate oven, include a 15-inch span of countertop on either side. **Alternative:** There are minimum length requirements for each element in the kitchen and so does the counter. It is advisable to use the minimum distances.

Seating area

A 28 to 30-inch-wide space dinner is more comfortable when a countertop or island doubles as a seating area. Also, plan for 30-inch-high counter with 24 inch depth. Allow a minimum 36 inch circulation space for chairs or stools. clearance behind chairs or stools or a 44-60 inch distance if there is a passage.

We can help you out to achieve your dream house

We are a firm with multitude of experience in residential, commercial, retail, hospitality and administrative sectors. Our domain extends on to include interior design. For Clients and Communities we cater, our aim is to come up with unique solutions that complement different generations. Our emphasis has been always on quality over quantity and this alone enables us to deliver results that are both functional and aesthetically sound. We dedicate thoughtful consideration towards user expectations and psychology.

Your spaces define you and allow us to define your Space.

Choosing your plant

If you are a beginner, choose plants that are low maintenance to ensure a long life. While there are a variety of plants suitable for indoors, some require a good amount of care and maintenance.

Soil

For most indoor plants, moist soil is a must. It shouldn't be over dry or overwatered. The soil should be kept moist and watered only when it starts to appear dry.

Light

Even if some indoor plants thrive in little dark environments, it is always advisable to keep them in very well-lit areas with natural light.

Drainage

Look for drainage holes in your pot. This ensures proper drainage and doesn't collect water in the roots, which often damages the roots.

Pests/ Insects

Plants that attract insects should be well treated to avoid an ugly environment inside. Neem oil is the best solution and can be sprayed on plants that attract flies and insects. Plants that are prone to pest attacks should also be treated with appropriate chemicals regularly.

How to take care of your Indoor Plants ?

Indoor plants should be an essential component of every interior design. Greenery brightens up indoor spaces and are known to have mood-boosting qualities. Indoor plants are popular because they are relatively easy to take care of, provide health benefits and can be used in a variety of indoor décor themes. There's something about bringing the green from the outdoors to the indoors that brightens up our homes and workplaces. It took some hunting and some research, but we found an impressive roster of plants that could thrive in your dimly lit house.



Some easy to maintain Indoor plants-

- | | |
|----------------|---------------------|
| 1. Pothos | 4. Aglaonema |
| 2. Snake Plant | 5. Peace Lilies |
| 3. Z plants | 6. Chamaedorea Palm |



Every project is incomplete without its detailing

Every project is incomplete without its detailing



Queen Huh Memorial Park Project at Ayodhya

Project aims to develop an iconic urban place to give further impetus and strength to old cultural relations between India & South Korea and to celebrate and honor the lost standing history of cultural exchange between two Nations



The Design Concept utilizes the proposed site as the storyboard to build a physical narrative to tell the epic story of Princess Suriratna's journey from Ayodhya to Korea and her wedlock with the Korean King Kim Suro leading to fusion of two great cultures and foundation of an entire clan. Keeping the cultural tradition into consideration, this project highlights the cultural exchange in the past and celebrates amicable relationship between two countries by incorporating generic design elements of both the countries into the landscape and architecture of the site so that it connects well to the community merging to the whole surrounding.



Sturdy Stone Pillar



Stone Pagoda



Queen Huh's Pavilion is enclosed by sturdy sandstone pillars. Pillars are the reminiscent of Queen's strong character and strength.



Queen and King's Pavilions are designed to establish the identity of these two cultures.

The entire landscape defies the notion of a convention park and have no forced boundaries. Keeping the theme of Korean garden, it fades gradually into its surroundings embracing the asymmetry and imperfection of an organic plantation. Along this theme, the entrance is also a guided pathway rather than a well defined doorway.



UP Tourism Awards Winner Design





What We can DO

PRE DESIGN

- Questionnaire sent out to clients to understand project brief
- CAD measurement layout provided by clients
- walkthrough of the space and all requirements

DESIGN PHASE ONE

- Mood boards
- Reference images for all areas
- Planning & furniture blocking and spacing

DESIGN PHASE TWO

- Finalised mood board + furniture layout
- First sketch up view
- Second revised sketch up view
- Final sketch up view with final look and feel

We Create We
We explore We



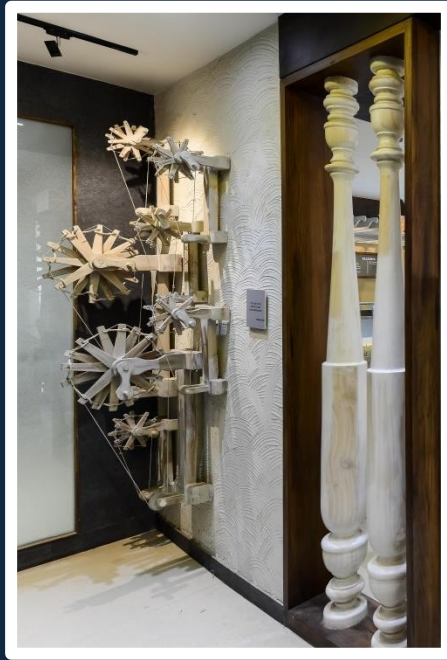
DESIGN PHASE THREE

- ☐ Furniture layout
- ☐ Structural drawings
- ☐ Measurement layout
- ☐ Door and window schedule
- ☐ Plumbing layout
- ☐ Wall electrical layout
- ☐ CCTV/security/speakers/Wi-Fi
- ☐ Ceiling layout and ceiling electrical
- ☐ Light fittings specification
- ☐ Elevation drawing
- ☐ Flooring layout
- ☐ Landscape layout + plant + details
- ☐ Bathroom drawings
- ☐ Kitchen drawings
- ☐ Furniture working drawing
- ☐ Interior details
- ☐ Loose furniture document
- ☐ Upholstery, art and accessories selection along with loose rugs

DESIGN PHASE FOUR

- ☐ Finalised drawing docket + final view
- ☐ All services + loose items tally
- ☐ Contractor selection and quotation checking
- ☐ Finalising on contractor and final quotation

enrich nurture



CONTACT US

K S INSIGHT ARCHITECTURAL CONSULTANTS

House No. 9, Unity Society, Nehru Nagar
Bhopal – 462003

www.architectk.in

+91 755 4916 489, +91 84620 69942

contact@architectk.com

Instagram : architect_k_atelier

facebook : architectkatelier

linkedin : k-s-insights-architectural-consultants